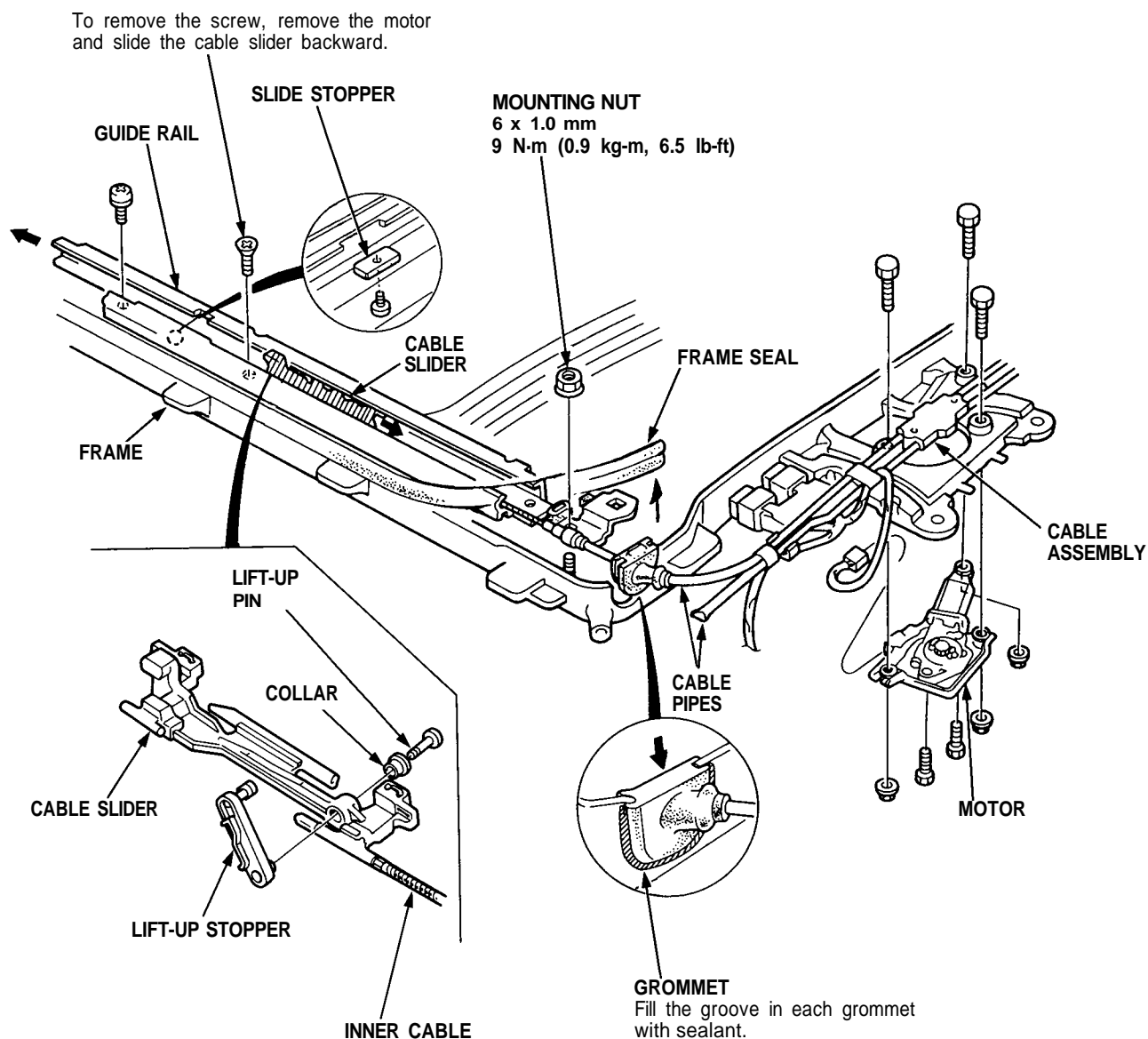




Guide Rails/Cable Assembly Replacement

1. With the frame out of the car, remove the motor from the frame (see page 20-40).
2. Remove the mounting nuts and lift off the guide rails, then remove the cable assembly with the cable sliders attached.

NOTE: Take care not to bend the cable pipes and guide rails.



3. Installation is the reverse of the removal procedure.

NOTE:

- Damaged parts should be replaced.
- Apply grease to the sliding portion.